

Trampoline with Safety Net



6FT-16FT

Packing details:



Up safety pole with EPE tube

Bottom safety pole with EPE tube

U-Leg

Arc-shaped tube

Spring cover pad

Safety net

Jumping mat

Instruction book

Spring

Screws

<p>Arc-shaped tube</p>	<p>Up safety pole with EPE tube</p>	<p>Bottom safety pole with EPE tube</p>
<p>U-Leg</p>	<p>Spring</p>	<p>Connecting tube</p>
<p>Wrench</p>	<p>Screws and nutsert</p>	<p>Drag hook</p>
<p>Spring cover pad</p>	<p>Safety net</p>	<p>Jumping mat</p>

Installation procedure



1. Connecting two arc-shaped tubes, then insert connecting tube



2. Insert the U-leg, this is an assembly then do it one by one



3. Turn all the assemblies upside down, and connect one by one



4. At the interface and the opposite of it, each person push the connection into a circle.



5. Install the spring with drag hook



6. The spring needs to be diagonal installed, then install the spring between two springs



7. After finish step 6, then install all springs one by one



8. Install the spring cover



9. Tie spring cover bandage to the spring



10. Install bottom safety pole like photos shows



11. Screw the nutsert



12. Finish step 10 and step 11, install all bottom safety poles.



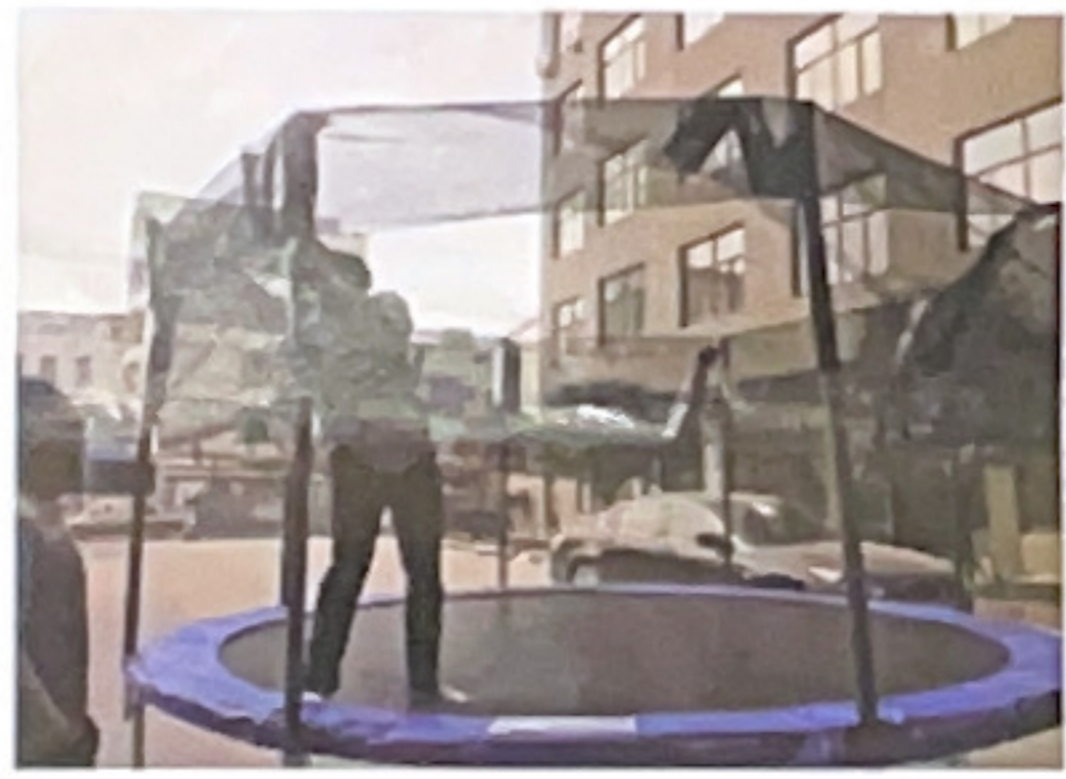
13. Put up safety pole into sleeve



14. Insert up safety pole into bottom pole



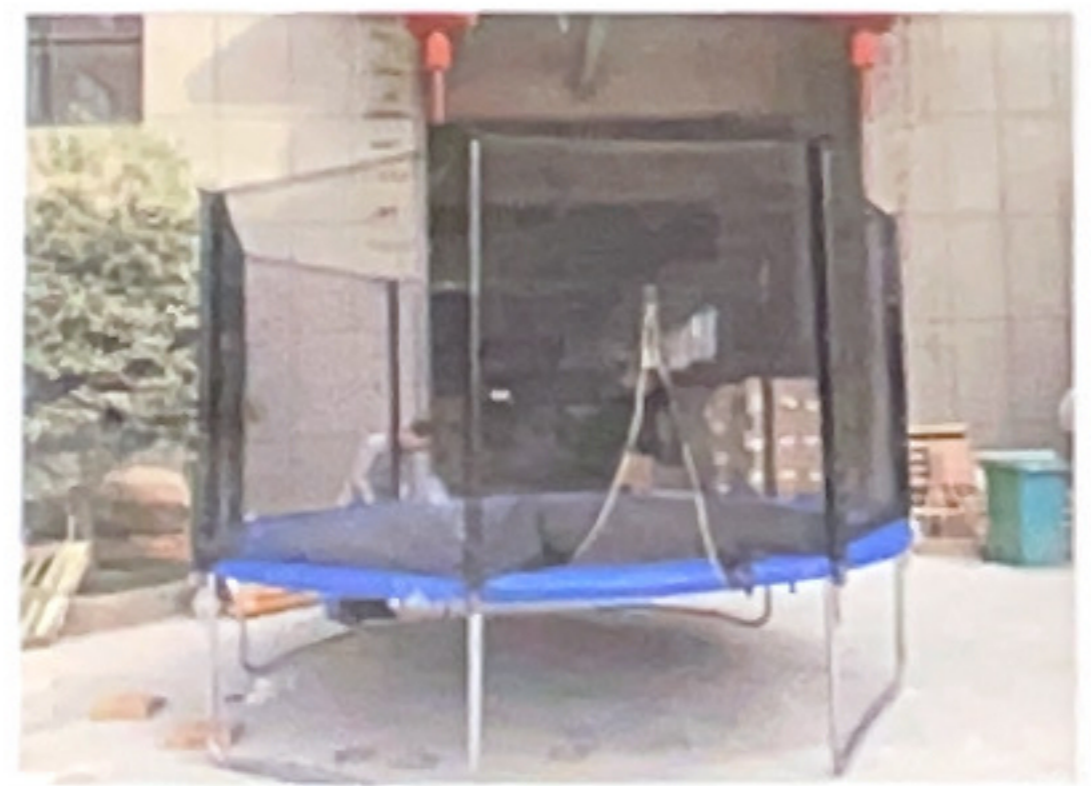
15. Do step 14 one by one



16. Finish step 14



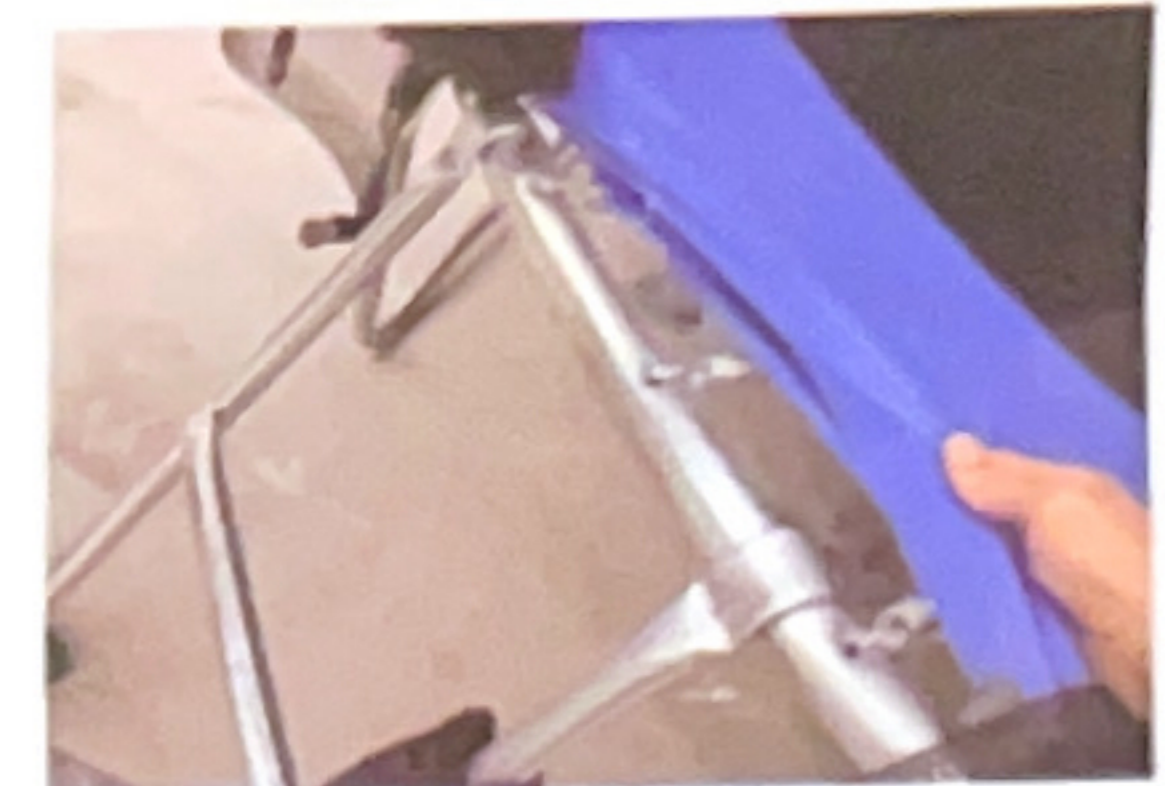
17. A man in the trampoline with his hands on the top of the safety net, and the other one goes outside the trampoline to pull the sleeve down.



18. Adjust the safety net



19. Put clasp on the hoop



20. install the ladder



Finish installation